



3D LOCATION PLATFORM

Delivering High Accuracy Indoor Location, including Floor Level Vertical Accuracy

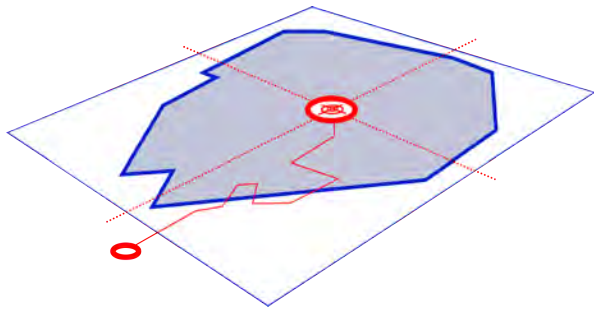
Independently Proven Performance

Flexible Methods of Implementation - Carrier Integrated and Over-the-top



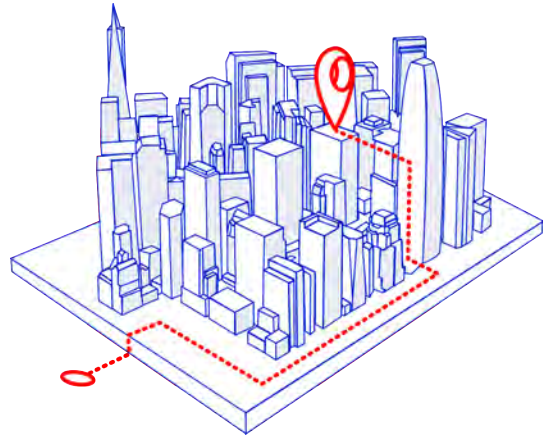
Polaris Wireless

The World is Not Flat ... and neither is Location Data



THE WORLD TO DATE: 2D MAPS, 2D LOCATION CAPABILITIES, MOSTLY 2D SERVICES

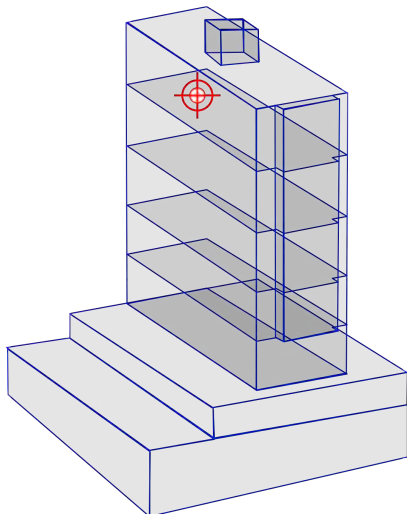
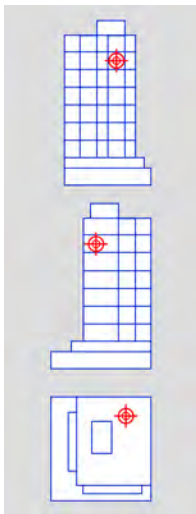
BUT...



THE WORLD IN REALTY!

Polaris Wireless - First to Market with 3D Location

The company's commitment to innovation is exemplified in anticipating market requirements for indoor and vertical location by being first to market with a commercially available 3D location product. The Polaris Wireless 3D location has been independently tested twice by the wireless industry and has been cited by the U.S. Federal Communications Commission in their vertical location regulation serving E911 emergency callers.



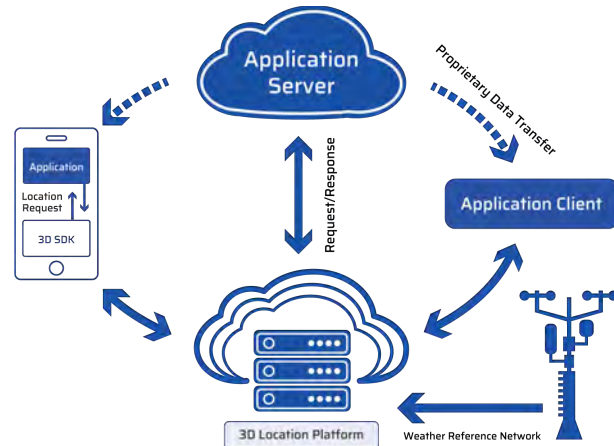
- Introduced initial vertical location solution in 2014
- Relevant IP portfolio of 100+ patents, including barometric-based location technology
- Solves most challenging vertical location impairments -Barometric Sensor Bias, Building Effect, Weather Reference
- Software-based solution – No firmware changes to devices or new infrastructure to wireless networks
- Independently demonstrated performance
- Cloud-based with high scalability and security
- Available through device-based application or API
- Implementation of standards-based integration towards wireless carrier networks

Polaris Wireless Delivers the Solution for Any Application

Flexible Implementation

Without the need for firmware updates in the device or new infrastructure in wireless carrier networks, the software-based Polaris Wireless 3D location offers flexibility to serve a variety of applications and implementation requirements.

- Standards-based carrier integration for E911
- Over-the-top integration for carrier or commercial applications
- Device software offered as stand-alone application or API/Weather Reference
- Cloud-based calculations can be performed on device for increased privacy
- Complete 3D location or just vertical, or z-axis, location depending on application needs



FCC-Compliant Solution for E911

The Polaris Wireless 3D location capabilities have been independently tested by the wireless industry with results proven to exceed the FCC's most stringent E911 requirements for indoor and vertical location. The company was founded to serve U.S. E911 location requirements and has been serving FCC-compliant location to consumers and wireless carriers continuously since 2003.

Dimension	FCC E911 Requirement	Polaris Wireless Accuracy
Indoor Location	< 50 meters	23.6 meters
Vertical Location	< 3 meters	2.8 meters
For 80% of calls in three major US test markets		

Over-the-Top Solution for Commercial Applications

The Polaris Wireless cloud-based and operator-independent mobile 3D location solution is truly universal, powering a wide range of applications across multiple industries to locate any mobile device on any network indoors and in real-time. The SDK integrates seamlessly with both iOS and Android applications and has a flexible API that is adaptable to address a variety of location oriented real-time and historical use cases. In the cloud, Polaris Wireless Hybrid Location Engine fuses all the collected measurement together to produce the most accurate 3D location estimate.



POLARIS WIRELESS 3D LOCATION PLATFORM



Highlighted Features

- 3D Location Proven high accuracy indoor and floor level Z-Axis
- Implementation Integrated with wireless carrier networks or over-the-top
- Cloud-based Scalable to support high transaction rates, public or private cloud
- Software Eliminated hardware in wireless networks or special firmware in devices
- Battery Consumption Minimal impact between 1 – 3 %
- OS Offerings Solutions for iOS, Android, AOSP, KaiOS
- Service Areas Nationwide availability with higher accuracy in FCC required markets

The Polaris Wireless Advantage

Polaris Wireless is committed to innovating high accuracy software-based location technology and associated analytics and applications. This is reflected in its robust IP portfolio. The company delivers these capabilities in relevant products that address key use cases in national security, critical infrastructure, public safety, and commercial markets. Polaris Wireless key differentiators include market leading high accuracy device location, accurate mass location, a fully integrated location and analytics solution, and now 3D location. Currently served markets continue to demand higher accuracy location and higher value location analytics and intelligence, and Polaris Wireless is a leader in anticipating and delivering the necessary solutions.

US Headquarters: **Mountain View, CA**

EMEA and International Headquarters: **Zug, Switzerland**

APAC Headquarters: **Bangalore**

For additional information, please contact:

www.polariswireless.com

+1 408-492-8900

info@polariswireless.com



Polaris Wireless